

Welcome

We are pleased to welcome you to Microsoft's public showcase for the upcoming datacentre project at our Skelton Grange location.

Microsoft plans to file a hybrid planning application following consultations with the local community and relevant stakeholders.

After reviewing the proposals, we invite you to share your thoughts and feedback.

We would be happy to address any questions you might have.



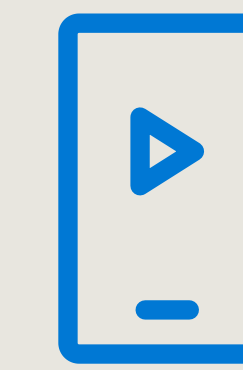
Datacentres are the infrastructure that delivers the cloud

The cloud plays a **significant role in our everyday lives**, enabling remote work and learning, global collaboration, supporting discovery and innovation, and importantly, powering critical life and safety services.

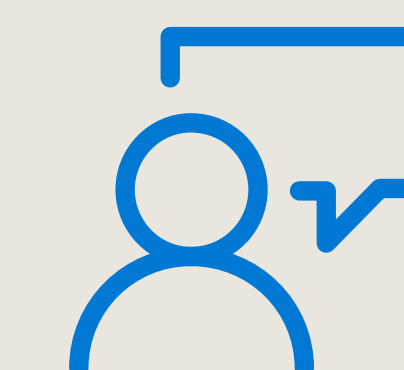
Datacentres have become integral to our lives, with social media, contactless payments and remote working all reliant on the functionality they provide. The UK needs more new datacentres to power the economy of the future.

Organisations in the UK rely on the Microsoft Cloud, including companies large and small, startups, governments, hospitals, banks, schools, and more.

Datacentres power our digital world



Streaming videos



Collaboration



Email



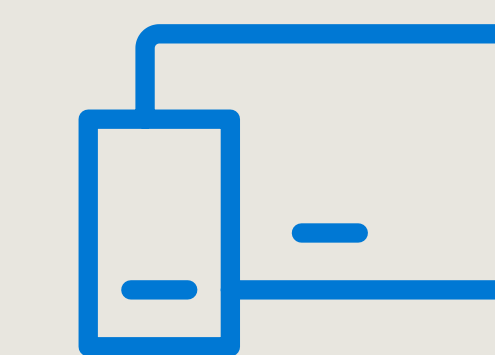
Online banking



File storage



Online shopping



Mobile apps

Who uses the cloud

Microsoft Cloud serves over **1 billion** customers and over **20 million** companies worldwide.

Over **95% of Fortune 500** companies run on Microsoft Azure.

Many of the UK's top companies and public sector agencies use Microsoft Cloud to modernise and digitise their operations.

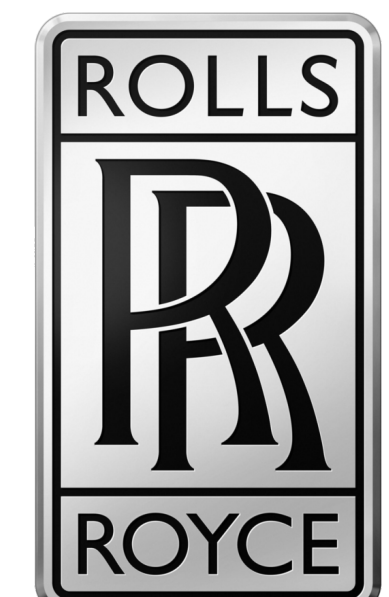
Government and education



Banking and financial services



Manufacturing



Travel and Transportation



Retail



Automotive



About the site

The site is situated at Skelton Grange in Southeast Leeds and is designated for development in the Local Plan.

Our plan for a new datacentre aims to enhance employment opportunities on the site.

There have been prior planning approvals for B8 uses on this site, and the site is currently undertaking remediation efforts to ready the site for future development.



Site Location & surrounds:

— Site boundary outlined in red

Our proposals

Microsoft is proposing to develop on a portion of the brownfield site to deliver a new datacentre campus.

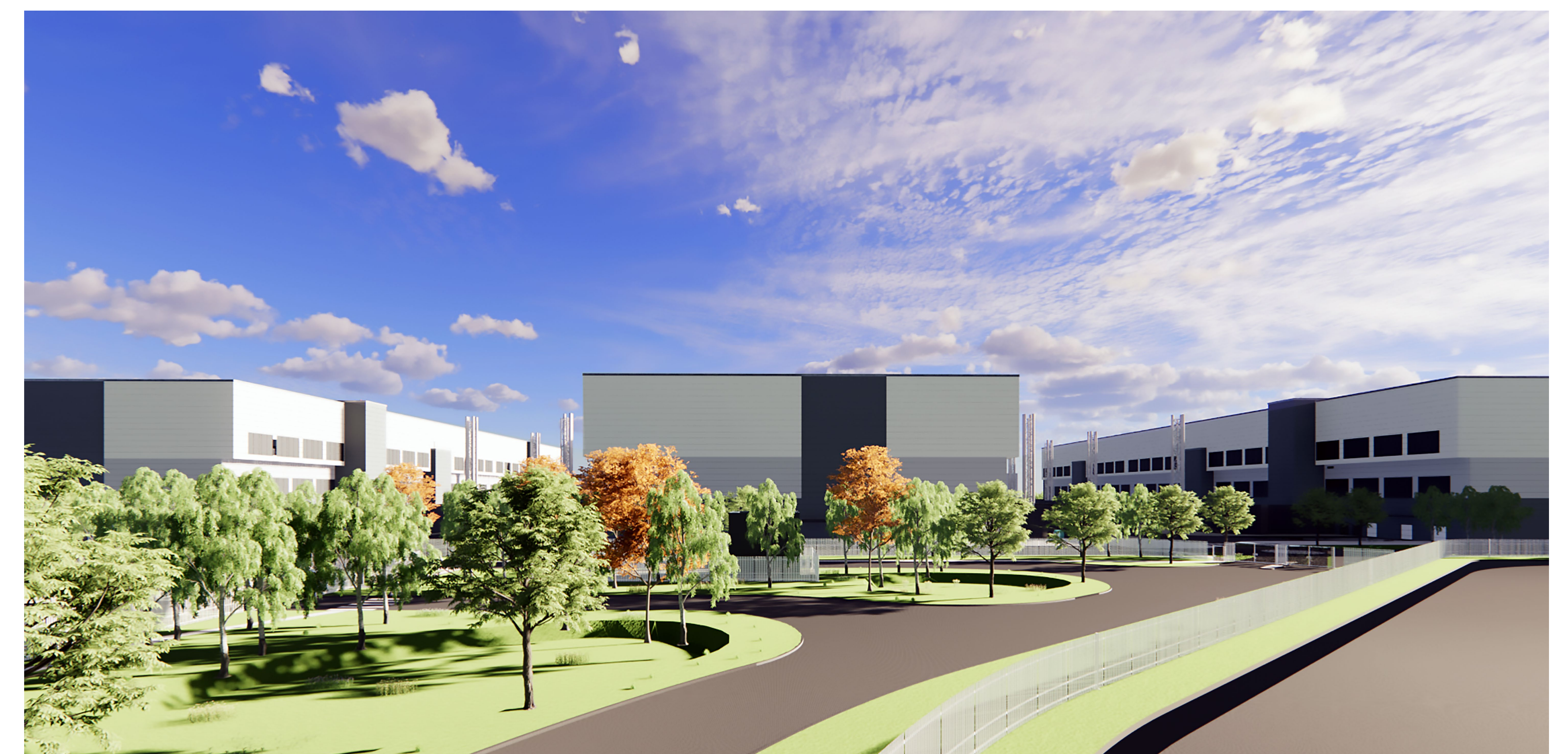
The proposals include three new datacentre buildings, including data halls, office space and further ancillary facilities, secure car parking, and landscaping improvements.

Conceptual CGI renders have been produced to illustrate how the datacentre will look upon completion.

The application is also seeking outline permission for development on adjacent land for up to 15,000 sqm of industrial floorspace, an EV charging station and associated development. An illustrative layout of this aspect of the development is also shown for context



Conceptual illustration of the location facing southeast.



Conceptual illustration of the datacentre structures viewed from the main entrance road, facing north.

Site Plan

The proposals consist of:

- Three three-story datacentre buildings.
- Each building will contain office and support facilities.
- Substations and other necessary infrastructure will be located in separate areas throughout the site.
- Parking for cars and bicycles will be conveniently situated near the entrances of each building.
- A landscaping plan that promotes biodiversity is suggested, which incorporates Sustainable Urban Drainage Systems (SUDs) using swales.
- The proposed development will utilize the access arrangements that have already been approved.



A comprehensive site plan that encompasses both the detailed and general areas of the entire site.

Landscaping Strategy

Microsoft is dedicated to sustainability and adhering to industry best practices. In line with this dedication, some of the excavated land from the datacentre construction will be transformed into an eco-friendly landscape that emphasizes biodiversity.

The proposed landscaping features:

- Grassland
- Wet grassland
- Planting along woodland edges
- Preservation of woodland corridors
- Planting of native trees and hedgerows
- Drainage features for attenuation

CONCEPT SKETCH



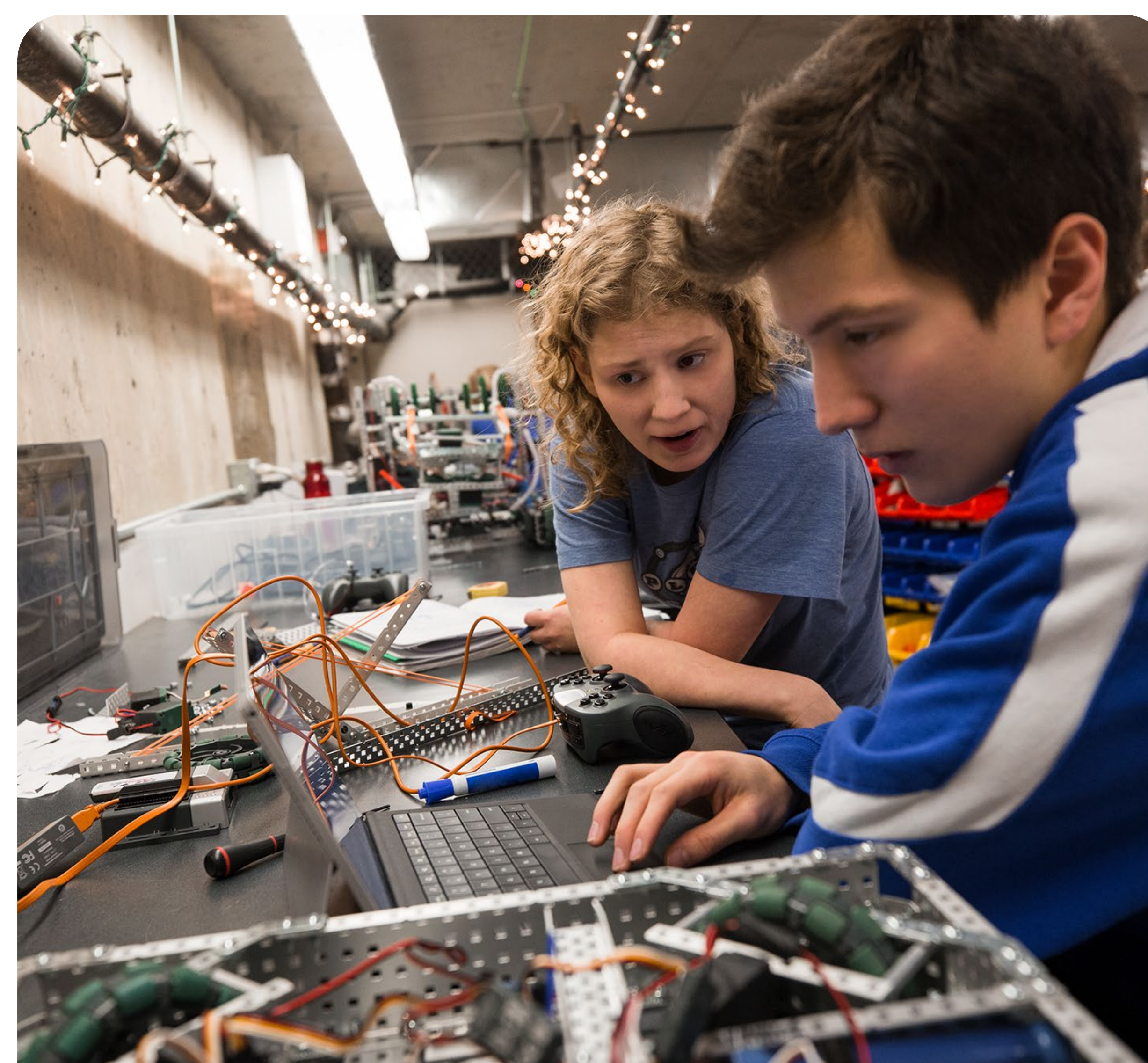
Conceptual landscaping for the detailed application site.

MICROSOFT DATACENTER COMMUNITY PLEDGE

When we join a community, we pledge to build and operate datacenters that address societal challenges and create benefits for communities



Contributing to a sustainable future



Advancing community prosperity and well-being



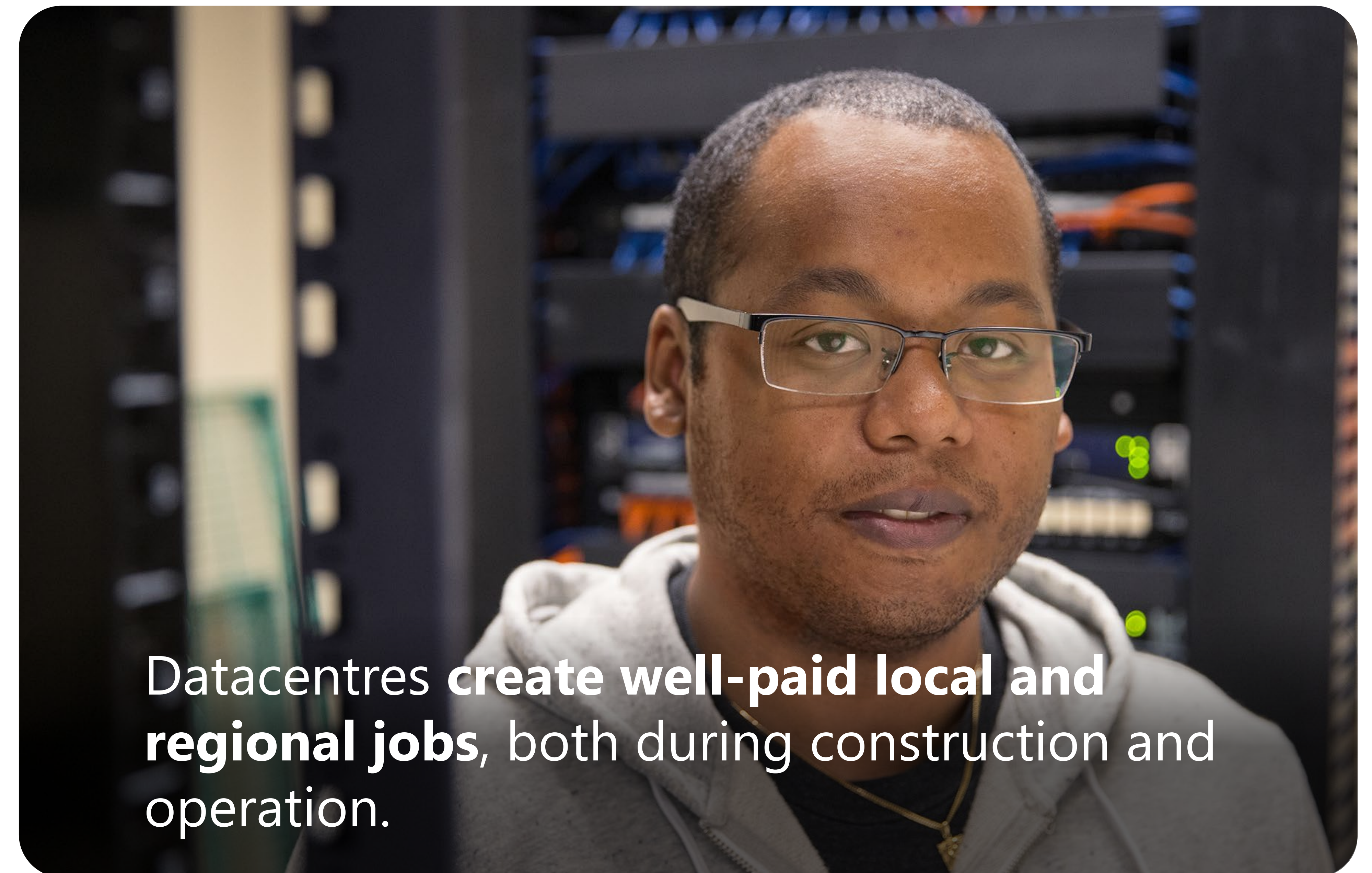
Operating responsibly as a good neighbor

Creating jobs and supporting local businesses

Datacentres have a substantial and enduring effect on the economic landscape of both local and regional areas.

They generate high-paying jobs in the community during both the construction phase and throughout their operational lifespan.

Additionally, suppliers and workers associated with datacentres contribute to the local economy by purchasing goods and services from nearby businesses.



Investing in community programs and partnerships

Microsoft strives to be a good neighbour and to create a positive impact in the communities that are home to our datacentres.



Community collaborations



Microsoft partners with various NGOs to back community initiatives where they work.

Generation is an organization that helps individuals encountering significant and various obstacles to employment by offering free, industry-specific bootcamp training, along with 6-month placement assistance after completing the programme.

Since 2021, over 470 **individuals in Yorkshire have** successfully graduated from a variety of bootcamps, with approximately **70% of participants securing jobs** after receiving support during the 6-month placement phase.



Catch22 is a charitable organization collaborating with Microsoft to **assist NEET individuals aged 18 and older** in finding jobs in the **Digital/IT industry**.

Active in various areas, such as Yorkshire and South Wales, the **Digital Edge programme** has enabled more than **1,000 participants** to break through employment barriers, with career coaches effectively aiding **350 of them in securing paid positions**.

Prioritising sustainability in our datacentres

Energy

- We've committed to have **100% renewable energy** coverage globally by **2025**
- Growing **new** renewable energy generation capacity through Power Purchase Agreements (PPAs)
- Eliminating the use of diesel for backup power by 2030



Water

- Designing datacentres to cool with outside air when possible **minimising water use**
- Collecting rainwater for use where feasible

Waste

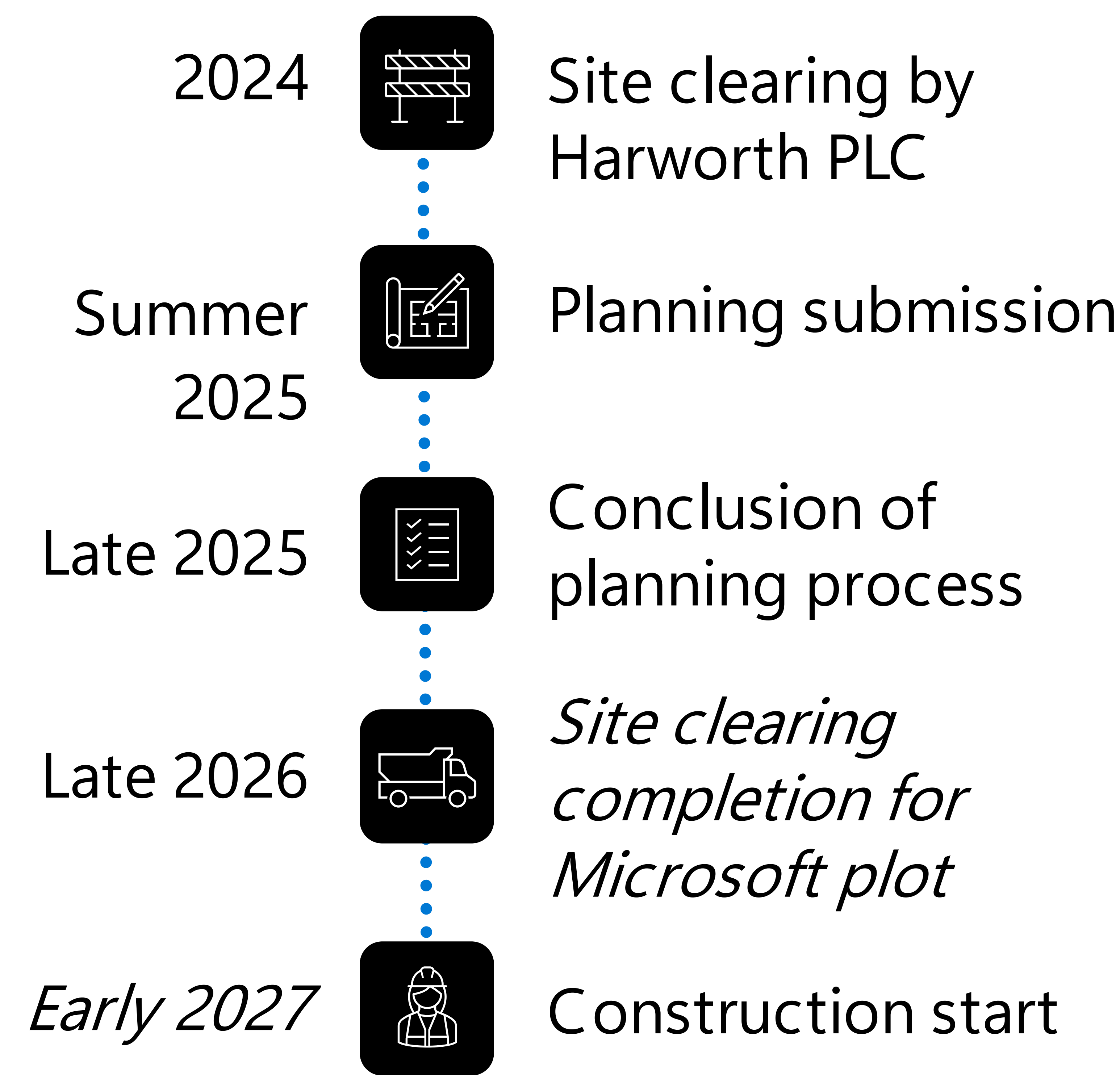
- Diverting **90 percent** of datacentre operational waste by 2030
- Developing Circular Centers to **reuse servers and hardware**

Next Steps

After this consultation, we will assess the feedback gathered before submitting our proposal to Leeds City Council.

The date of construction completion does not signify when the datacentre will be operational or available.

The dates provided are tentative, may change, and are reliant on the planning process.



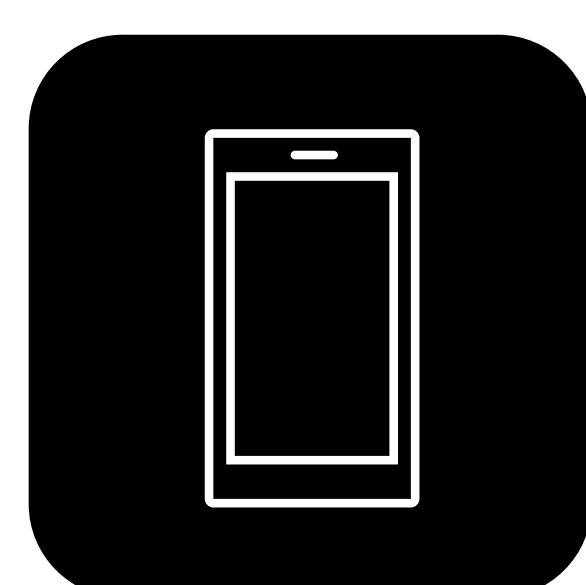
Indicative timeline

Thank you

Thank you for participating in our consultation, we hope you found it useful and informative.

Feedback

If you have any further questions or comments, please contact the Microsoft Community Affairs team.



0800 915 3677



UKDC@microsoft.com

For more information on our operations in the UK, visit:

aka.ms/DCCommunityUK

