

Welcome

Welcome to Microsoft's public information exhibition for a proposed data centre in Jigginstown, near Naas, County Kildare.

We plan to invest in this new data centre to further strengthen Ireland's cloud infrastructure - which will help enable everyday use of digital technology.

Please review our early concepts and let us know if you have any queries we can help you with.

Data centres power our digital world



Streaming
videos



Collaboration



Email



Online banking



File storage



Online
shopping



Mobile apps

Data centres are the infrastructure that delivers the cloud

The cloud plays a significant role in our everyday lives; enabling remote working and learning, global collaboration, supporting discovery and innovation and, importantly, powering critical life and safety services.

Data centres have become integral to our lives, with social media, contactless payments and remote working all reliant on the functionality they provide.

The Microsoft cloud serves over one billion customers and over 20 million companies worldwide. In Ireland, data centres are crucial to the digital infrastructure that supports a wide range of organisations across different sectors.

This includes many top Irish companies and public sector bodies.



Sacred Heart School
Tullamore



Site location

The campus is located at Jigginstown, Naas, Co. Kildare - as shown below.

This site earmarked for development was zoned exclusively for data centre development by Kildare County Council in the Naas Local Area Plan 2021-2027. This means the Council has identified it as suitable for a data centre and the land cannot be used for any other kind of development.

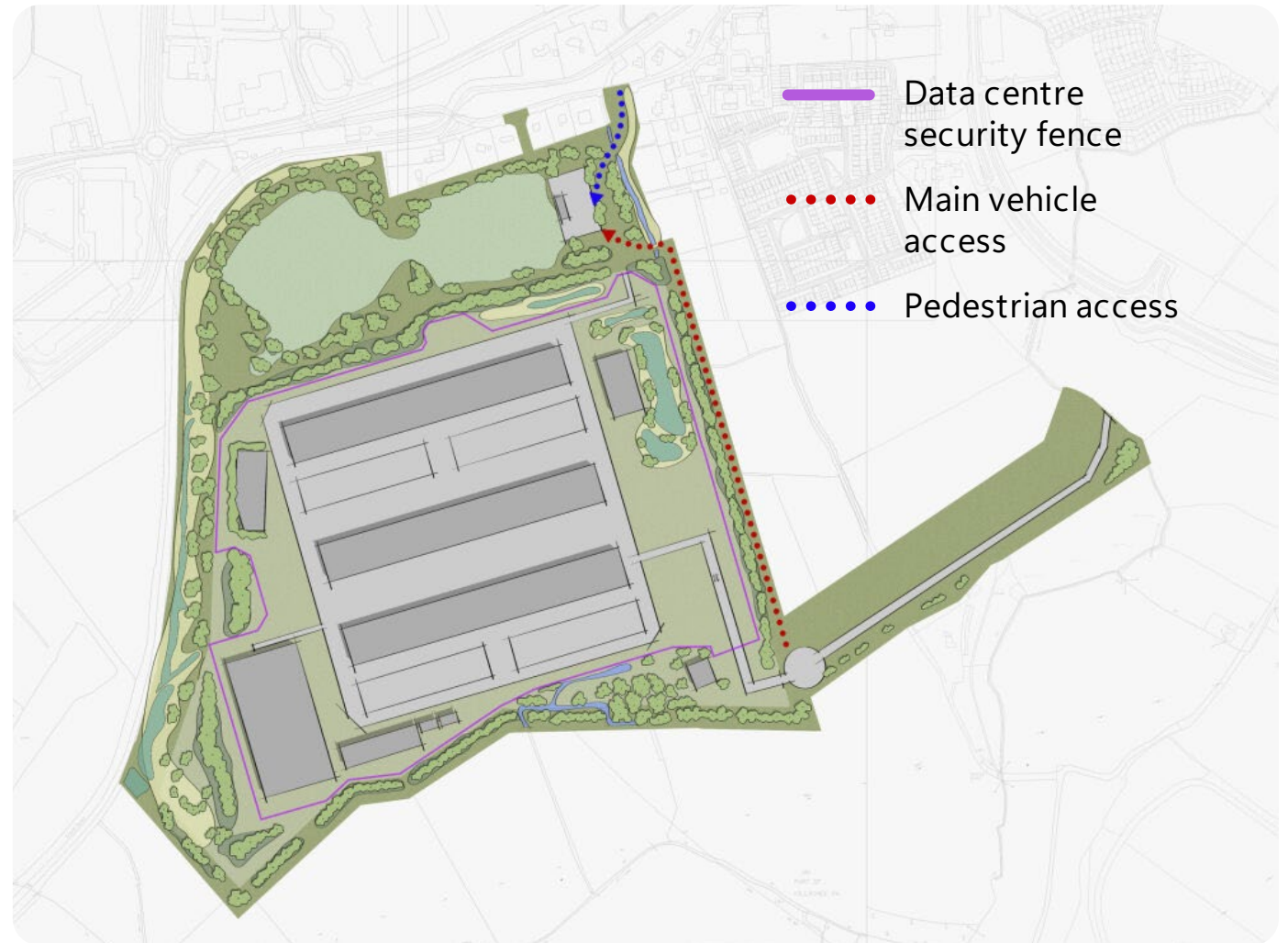
The proposed development is in line with government policy, which aims to promote Ireland as a destination for vital technology infrastructure such as data centres.



About the site

This investment by Microsoft will involve a number of elements, including:

- The data centre campus
- Landscape improvements
- Recreational facilities for the public
- An electrical sub-station
- A new access road
- Additional infrastructure that will link the data centre to its electrical supply

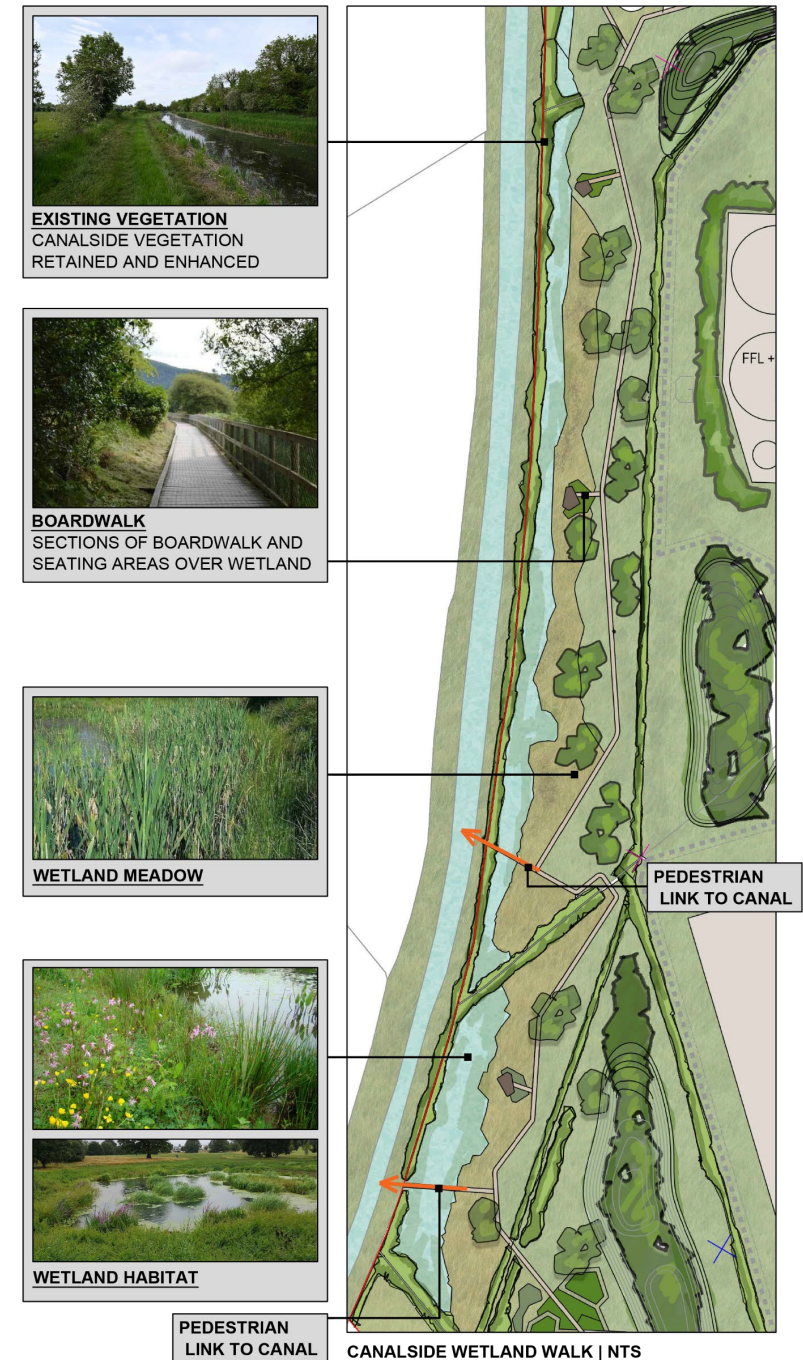


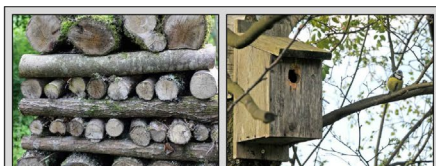
A conceptual masterplan for the area is being developed (pictured above). As design is at an early stage, this may be subject to change as the project develops.

Investing in new parklands and recreation

Some of the most significant opportunities offered by the development are the provision of multi-use, municipal recreational amenities, around 37 hectares of new parklands for local people to enjoy, as well as almost 5km of walking and cycling routes for the community. The new investments will also include:

- Creating a pollinator hub at the edge of the site to increase the population of important insects, like bees and butterflies.
- Surrounding the site with wet meadow and native trees to create an attractive habitat for a variety of animals and plants, while screening the site from neighbouring properties.
- Integrating green walls on the outside of the data centre to blend with the surrounding landscape.





BIODIVERSITY ACCELERATION ACTIONS
LOG PILES, BIRD/BAT BOXES, INSECT HOTELS, RE-WILDING



PICNIC AREA



WOODLAND WALKING ROUTE



ORCHARD WITH FLOWERING FRUIT TREES

POLLINATOR HUB | NTS



EXISTING VEGETATION CANALSIDE VEGETATION RETAINED AND ENHANCED



WETLAND MEADOW



PARKLAND



EXERCISE ROUTES



EXERCISE ROUTES



PARKING REINFORCED GRASS TO OUTER PARKING BAYS

DRESSING ROOMS & PARKING

MULTI-USE PITCHES

MULTI-USE PITCHES

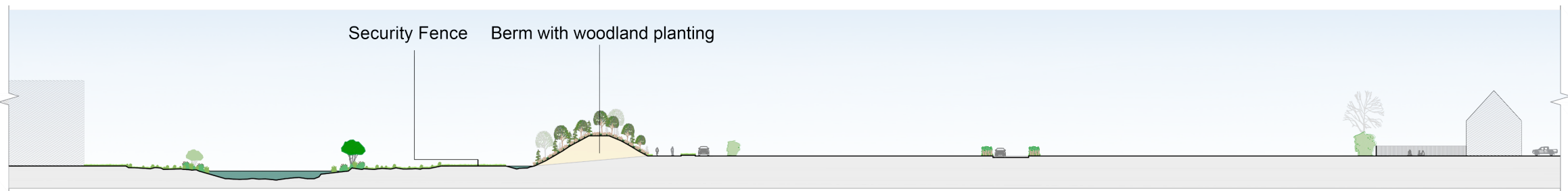
PUBLIC PARKLAND | NTS

BERM + NATIVE WOODLAND



PITCHES WITHIN PARKLAND SETTING





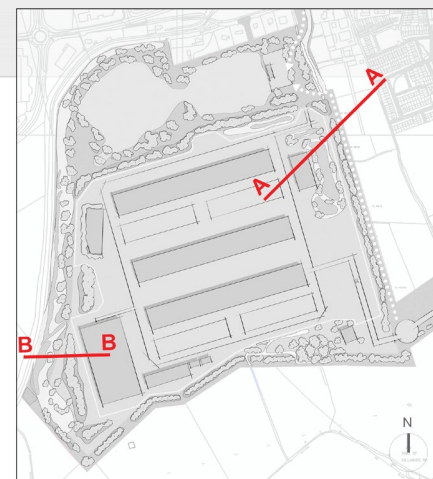
SECTION A-A | 1:500

0 20m



SECTION B-B | 1:250

0 10m



KEY PLAN | NTS

Prioritising sustainability in our data centres

Energy

- We aim to use 100% renewable energy coverage globally by 2025
- Microsoft is procuring renewable energy supply in Ireland, for our known and forecasted electricity needs, through Corporate Power Purchase Agreements - in alignment with our global sustainability goals.
- We publicly announced our commitment to over 900 megawatts of Corporate Power Purchase Agreements in 2022.



Water

- In Ireland, thanks to our mild climate, data centres use outdoor air to control server room temperature, minimising water usage for cooling
- Rain water captured at the site will be used for cooling the data centre

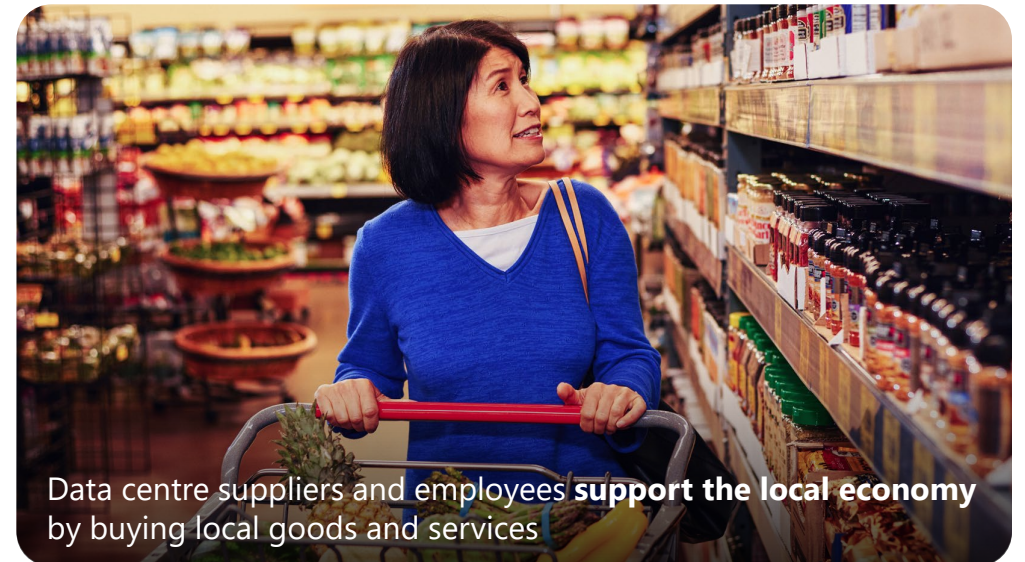
Waste

- We've committed to diverting 90% of data centre operational waste by 2030

Powering the economy

We strive to be a good neighbour and to generate a positive impact in the communities that are home to our data centres. Data centres have been an important fixture of the technology eco-system in Ireland for a number of years and have significant benefits for the economy, digital sector, environment and local communities.

- The technology sector in Ireland is a key pillar of the Irish economy, adding €52 billion to its value and employing 140,000 people.* (Beringa Report)
- It is anticipated significant construction jobs will be created while the Jigginstown data centre complex is being built
- When operational, around 350 long-term jobs will be created at the data centre – jobs such as IT management, human resources, electrical and mechanical engineers, as well as security people and campus maintenance.





Investing in the community

Microsoft empowers local communities in Ireland to achieve more, by working in partnership with schools, universities and charities.





Thank you

Thank you for your interest in reading about our concepts for this planned investment for Jigginstown, we hope you found it useful and informative. Development is at an early stage, due to the complexity of the project and the various elements.

As we continue to work on our plans, we will maintain open lines of communication with the community and provide updates regarding significant developments.

If you have any further questions or comments, please contact the Microsoft Community Affairs team:



dcinfoirl@microsoft.com



00353 87 203 6920

For more information on our operations in Ireland, visit: aka.ms/jigginstownDC

