

Welcome!

Please walk around the room:

- Review materials
- View the maps and renderings
- Talk with staff

¡Bienvenido!

Recorra el recinto:

- Revise los materiales
- Consulte mapas y presentaciones
- Hable con el personal

Datacenters are the infrastructure that delivers the cloud

The cloud plays a **significant role in our everyday lives**, enabling remote work and learning, global collaboration, supporting discovery and innovation, and importantly, powering critical life and safety services.

Organizations in Washington rely on the Microsoft Cloud, including companies large and small, startups, governments, hospitals, banks, schools, and more.

Datacenters power our digital world



Streaming videos



Collaboration



Email



Online banking



File storage



Online shopping



Mobile apps

Microsoft datacenters are part of Central Washington

Since establishing our first datacenter in Quincy in 2007, Microsoft datacenters have made an impact on the local and regional economy



Jobs

Datacenters **create family wage jobs**, both during construction and operation, specifically:

Construction since 2014:

- 9 million construction hours
- Average of 450 construction jobs per year

Operations jobs: 430 full-time employees and contractors



Local economy

Datacenter suppliers and employees **support the local economy** by buying local goods and services



Tax Revenue

Tax revenue from Microsoft datacenters generates important funding for local and county governments, which has helped fund:

- Schools
- Local services (e.g., fire and police)
- New facilities (e.g., libraries)

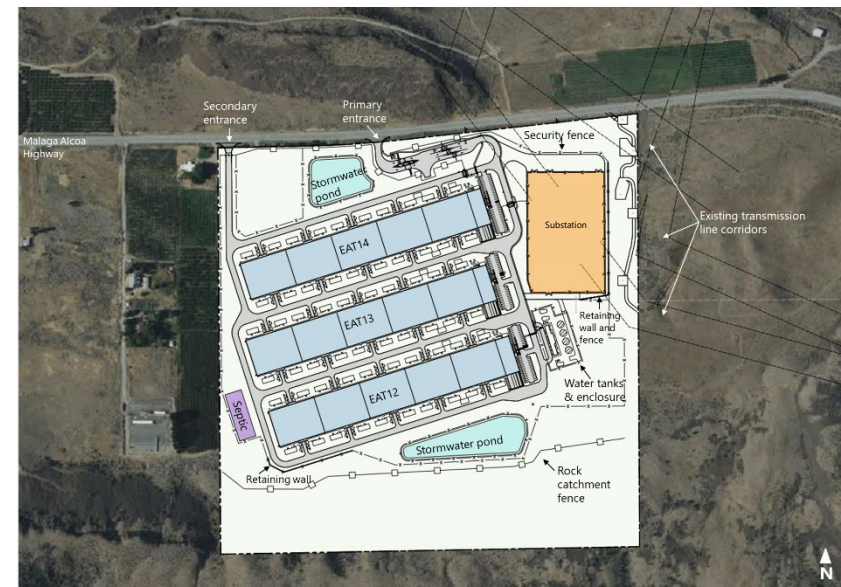
Malaga datacenter project overview

Current plan for this site at full buildout, includes:

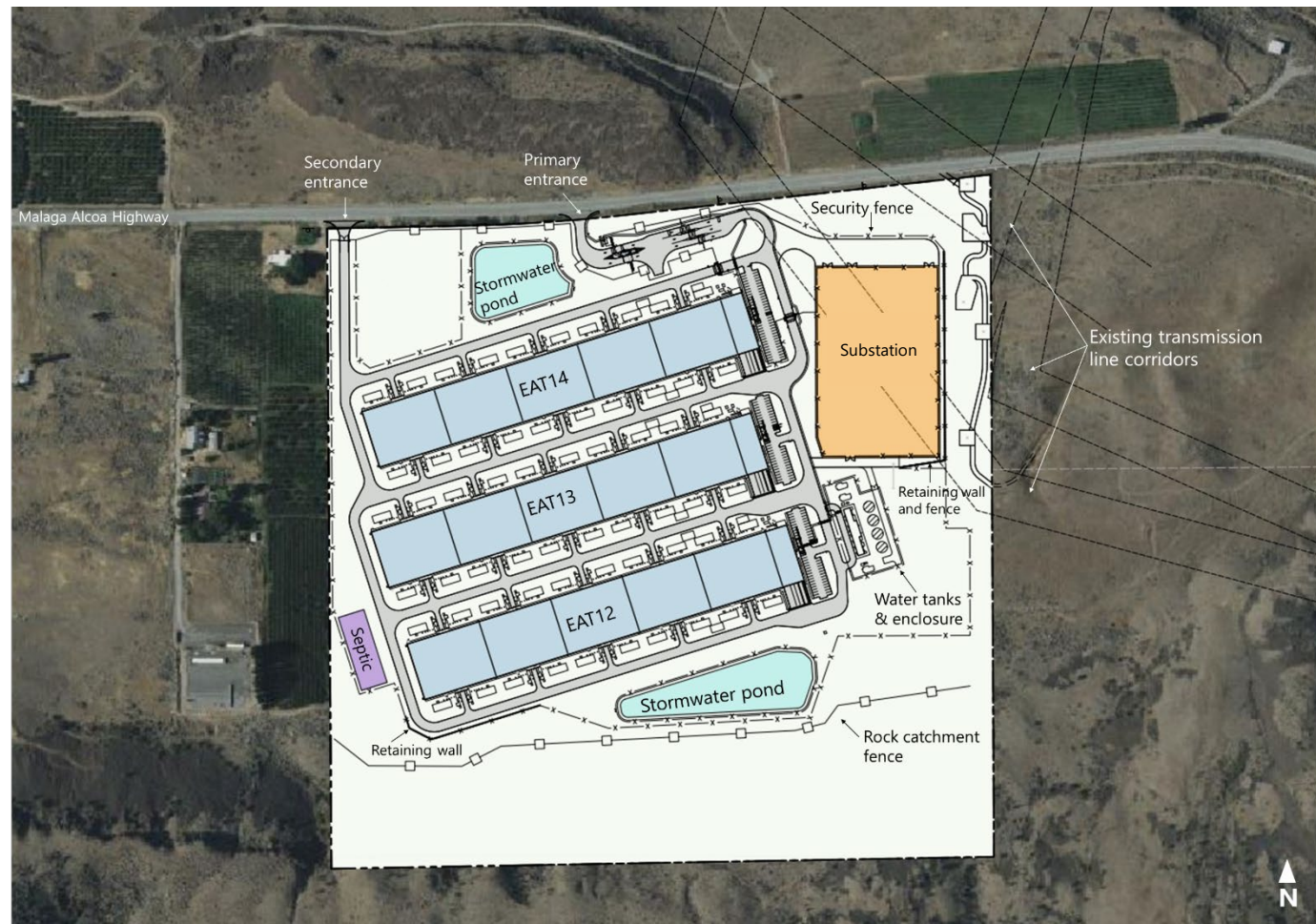
- 3 datacenter buildings
- 1 substation to serve entire campus
- An estimated 60-70 vendors and employees per building, 24/7

Currently in first phase of development, includes:

- 1 datacenter building and support facilities
- 1 substation and switchyard
- Onsite water tanks
- Fencing and landscaping



Conceptual site plan



**View of site from
Malaga Alcoa
Highway**

**Vista del complejo
desde la carretera
Malaga Alcoa**



View of office and parking areas

Vista de oficinas y zonas de estacionamiento



**View looking
NW towards
East Wenatchee**

**Vista hacia East
Wenatchee, al
noroeste**



How will the site be powered?

Microsoft has Interconnection Agreement with Chelan County PUD for energizing the site

Chelan County PUD will:

- Deliver electricity to power the site
- Upgrade nearby transmission lines
- Construct the site's substation

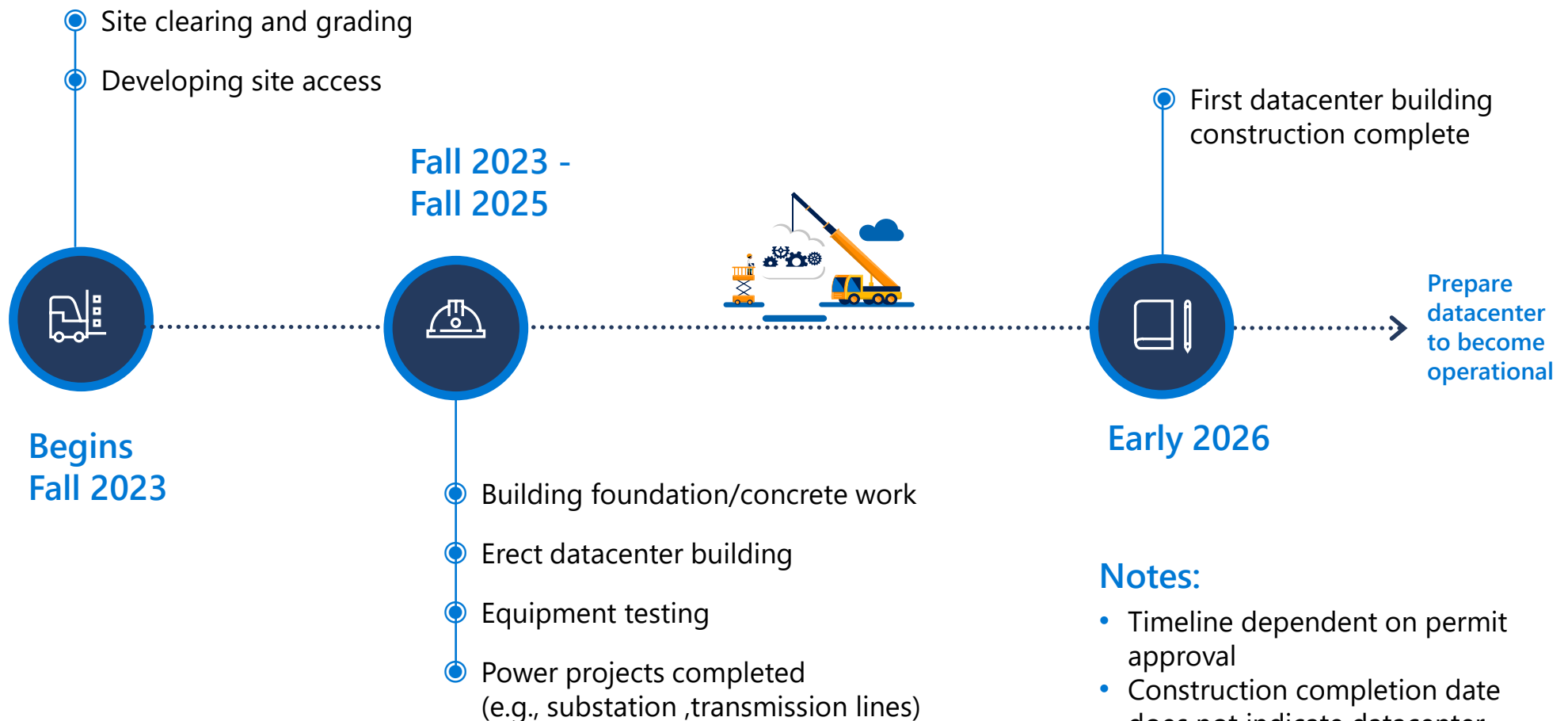


Amount of power and where it's coming from is yet to be determined

No Chelan County PUD customer dollars are paying for our development.

Microsoft is funding all aspects

Estimated timeline for first phase of construction



Notes:

- Timeline dependent on permit approval
- Construction completion date does not indicate datacenter operation/availability
- Microsoft anticipates completing the two additional datacenter buildings in the future (dates undetermined)

Microsoft datacenters create family-wage operations jobs and construction jobs, as well as positive impacts to local economy



Datacenter Construction

- Electricians
- Plumbers and pipefitters
- Carpenters
- Structural iron and steel workers
- Concrete
- Earth movers



Datacenter Operations

- Campus management
- People management
- Critical environment operations
- Learning and development
- IT Operations
- Mechanical engineers
- Electrical engineers
- Security contractors
- Building maintenance



Scan to
learn more

Or visit careers.microsoft.com

Community partnerships

Since 2017, Microsoft has invested more than \$2.65 million across Douglas, Grant, and Chelan County non-profits including **NCW Tech Alliance, Apple STEM Network, Wenatchee Valley College, and the Malaga Colockum Community Council**

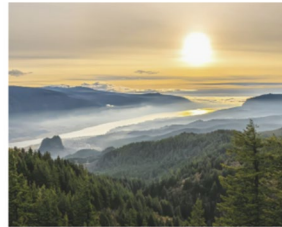
In 2018 Microsoft partnered **with Big Bend Community college** to open the state's first Microsoft Datacenter Academy

Microsoft contributed tens of millions of dollars toward **Washington's first industrial water reuse facility** in Quincy which opened in June 2021

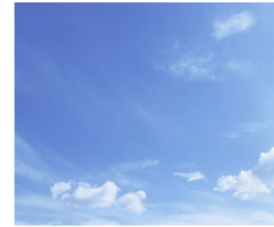


Scan to
learn more

Or visit local.microsoft.com/centralwa



Partnering with the City of Quincy to open Washington's first industrial water reuse center



Replacing city vehicles to reduce emissions in Quincy, Washington



Get to know Techspark and the NCW Tech Alliance



Introducing the Microsoft Datacenter at big Bend Community College



Microsoft honored to receive the Quincy Valley Business of the Year award



Restoring Wenatchee and Entiat River ecosystems by reintroducing beavers



What is the site doing about water?

Datacenter design focuses on water efficiency

The datacenter is designed with direct evaporative cooling which uses outside air and zero water when temperatures are below 85°F, reducing water for cooling to less than 5% of the year.

Water service includes:

- Chelan Douglas Regional Port Authority (CDRPA) will develop water line extensions, two new wells, and a new reservoir
- Malaga Water District will own / operate the water infrastructure once complete
- We will also have onsite water tanks



No CDRPA or Malaga Water District customer dollars are paying for our development.

Microsoft is funding all aspects

Next steps for the Malaga datacenter site

Estimated timing	Major milestone
Spring 2023 – Spring 2024	Permitting processes with Chelan County and Washington Department of Ecology
Fall 2023	Construction begins for first phase of site development
Early 2026	Construction complete for first phase of site development* (e.g., one datacenter building, substation, water tanks, support facilities, landscaping)
Future	Construction of second and third phases of the site, based on customer demand

Note: Construction completion date does not indicate datacenter operation/availability

**View of substation
& full campus
looking NE to
Wenatchee**

**Vista de la
subestación y el
campus completo
mirando hacia el NE
a Wenatchee**



Campus at dusk;
downcast lighting
avoids light trespass
offsite

Campus al
atardecer; La
iluminación abatida
evita la intrusión de
luz fuera del sitio



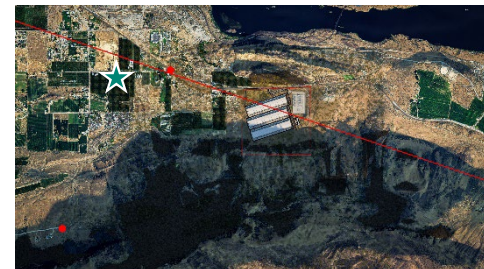
**View from mountain
near Cathedral Rock
about 1 mile from site**

**Vista desde la
montaña cerca de
Cathedral Rock a
aproximadamente 1
milla del sitio**



View from intersection of
Saturday Road and
Malaga Alcoa Highway

Vista desde la
intersección de
Saturday Road y
Malaga Alcoa Highway



East – West cross
section of campus

Sección transversal
Este-Oeste del
campus

