

Microsoft datacenters in Ireland

As more people and businesses rely upon technology to stay connected, informed, and productive, digital needs in Ireland and around the globe are growing. And that means the need for datacenters are growing too.

Microsoft strives to support the communities where our employees live, work, and operate our datacenters. With that, it's important we share information to ensure you understand why datacenters are needed, Microsoft's commitments to responsible operations, and the benefits of hosting a datacenter in your community.

[Why datacenters>](#)

[Microsoft commitments>](#)

[Community benefits>](#)

The cloud powers our digital world

Cloud computing is the delivery of computing services over the Internet. Common daily activities are made possible through the cloud:



Email



Online banking



File storage



Collaboration



Online shopping



Mobile apps

Cloud computing provides consumers and businesses with the benefits of data sovereignty and privacy, lower costs, easier access, higher reliability, and lower carbon footprint.

The Microsoft cloud is for everyone

Microsoft's cloud serves over 1 billion customers and 20 million+ companies worldwide

Irish organizations rely on the Microsoft Cloud including large enterprises, startups, governments, hospitals, banks, schools and other critical infrastructure organizations.



**Comhairle Contae
Fhine Gall**
Fingal County
Council



When Microsoft joins a community, we bring our commitments for a better world



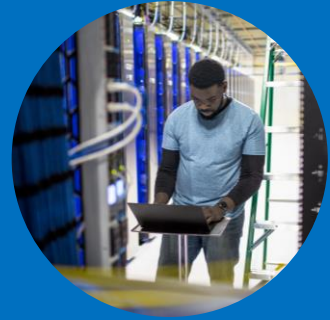
Support
inclusive economic
opportunity



Protect
fundamental rights



Commit to a
sustainable future



Earn trust

Microsoft datacenters are key to our sustainability goals

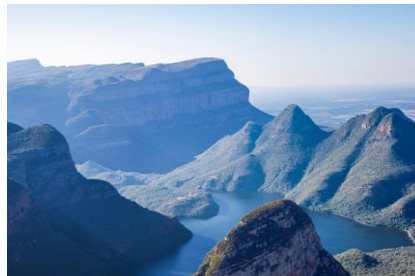
Carbon negative
by 2030



In 2017, Microsoft signed a power purchase agreement (PPA) wind energy from **the 37-megawatt Tullahennel wind farm** in County Kerry, Ireland

Power usage effectiveness (PUE) measures **cloud energy efficiency**. PUE. Lower PUE indicates more energy efficient datacenters, with PUE of 1.0 being the most efficient. Microsoft's Ireland datacenters had a **12-month weighted average PUE of 1.20** through July 2021.

Water positive
by 2030



Microsoft uses adiabatic cooling at most of our Ireland datacenters. This method of cooling **uses outside air instead of water** for cooling when temperatures are below 25 degrees Celsius, reducing water use to less than five percent of the year.

Zero waste
by 2030



In 2020, we successfully opened our **first Microsoft Circular Center in our North Holland datacenters**, which is designed to extend the lifecycle of servers through reuse and support a circular economy for the Microsoft cloud.

By early 2022, we will bring this innovative approach to waste reduction at our Ireland datacenters.

Since 2018, Microsoft has donated more than €1.49 million to projects supporting community-identified priorities



Maynooth University, received funding from Microsoft to help with their unique mentorship program, **AI Academy for Good** to give young women the opportunity to develop their STEM skills and provide a pathway for continuing education and careers.



Microsoft partnered with SSE Airtricity, Ireland's leading renewable energy provider, to install solar panels on 27 schools and hospitals around the provinces of Leinster, Munster, and Connacht for Ireland's first distributed power purchase agreement, with a sustainability education program.



Collaborating with Collinstown Park Community College, Microsoft is facilitating workforce training to prepare students for careers in IT, including work in datacenters. Servers and other IT equipment were donated to build a lab that emulates a working datacenter.

Microsoft datacenters create family-wage operations jobs and long-term construction jobs

Microsoft datacenters represent a capital-intensive investment and long-term commitment to the community. More than 310 full-time employees and contractors work across Microsoft's Ireland datacenter campuses. Since 2018, more than 3.2 million hours have been worked on construction projects, with an average of 550 construction jobs per year.



Datacenter construction

- Electricians
- Plumbers and pipefitters
- Carpenters
- Structural iron and steel workers
- Concrete workers
- Earth movers



Datacenter operations

- Campus management
- People management
- Learning and development
- IT operations
- Mechanical engineers
- Electrical engineers
- Security contractors
- Building maintenance

Microsoft datacenters are best in class in performance, reliability, safety, and sustainability



Datacenters use fossil fuel generators for backup power during the rare grid emergency and accounts for **less than 1 percent of our overall emissions**.



Compared to other industrial facilities, **datacenters do not create noise pollution or have a significant impact on traffic flow or congestion.**



Microsoft is **piloting running backup generators with renewable, cleaner-burning fuels**, and also piloting the replacement of datacenter generators with long-duration batteries.



Microsoft construction and operations in Ireland comply with applicable air quality requirements to support healthy regional air quality.